

# NM1-2-3

NUCLEAR MEDICINE FACULTY CPD SERIES

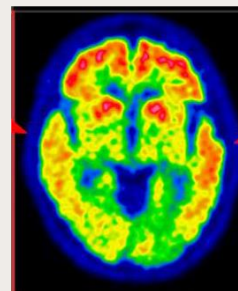
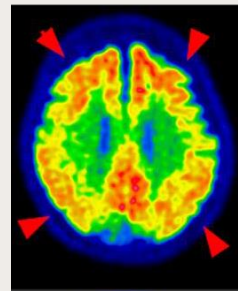
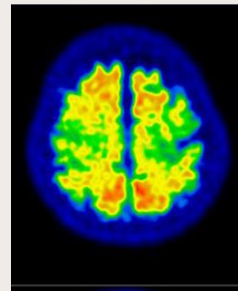


## Amyloid PET Brain Scan for Alzheimer's Disease

Functional degeneration in Alzheimer's Disease (AD) is irreversible and significantly affects the quality of life of patients and their caregivers.


Amyloid plaque deposition is one of the hallmark pathologies for diagnosis. Amyloid-targeting therapy for early symptomatic AD was approved by FDA in 2024. Therefore, early detection of amyloid plaque is critical in disease management. National Institute of Aging and Alzheimer's Association (NIA-AA) subsequently published the revised diagnosis and staging criteria to include amyloid PET scan. ([Link](#))

C-11 Pittsburgh Compound B (C-11 PiB) is regarded as the standard reference in amyloid PET. Other F-18 labeled tracers are also commercially available.



### What is NM1-2-3?

- 1 Topic
- 2 issues
- In every
- 3 months

 1 CPD will be awarded per topic

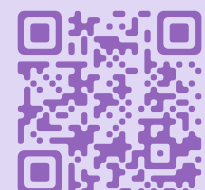
### Introduction

NM 1-2-3 offers participants CPD points in the "self-directed activities" category.

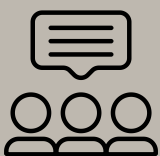
In each issue, a topic and some guiding hints are provided. Your task is to write a reflective abstract based on your clinical experience and information search. A summary of submissions will be shared in the next issue, allowing you to learn from the experiences of your peers. There are no right or wrong answers. How much you share is how much you will learn.

All associate members, members and fellows from all faculties are welcomed.

Submit your feedback on or before 30 April 2025!



### Tell us



Discuss why and how amyloid PET is used to diagnosing AD based on NIA-AA criteria.

Suggest and compare different amyloid PET tracers

Review the availability of amyloid PET in Hong Kong. Suggest the limitations.

Write a total of 500 words or more in Issue 3 and 4 for 1 CPD Point